

## Extend Moose Hunting season in Unit 18 Kuskokwim Hunt area

**Department Recommendation: Support**

*This is a public proposal.*

*Central Bering Sea AC*

*ACR accepted after fall meeting*

*Lower Kuskokwim AC*

*ACR accepted after fall meeting*

*Bethel AC*

*Pending meeting*

*Mid Lower Yukon AC*

*ACR accepted after fall meeting*

*Coastal Lower Yukon AC*

*Support with Amendment(5-0)*

## Current Regulations

Residents by registration permit only

1 antlered Bull  
by registration permit only

September 1 - 10

## Proposed Regulations

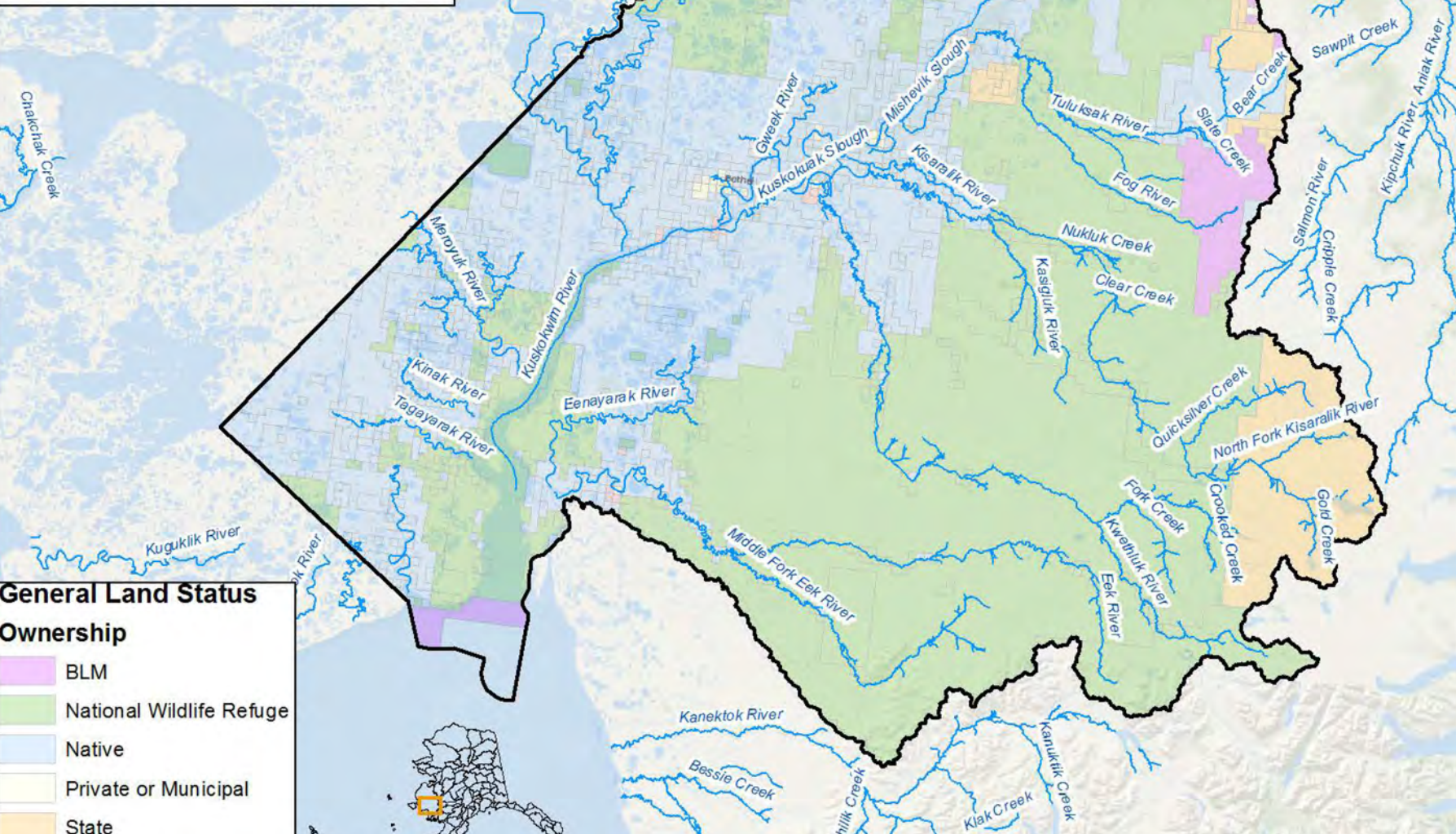
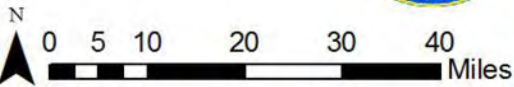
**Residents**

**1 antlered Bull  
by registration permit only**

**September 1 - 30**



# Unit 18 Moose Hunt RM615



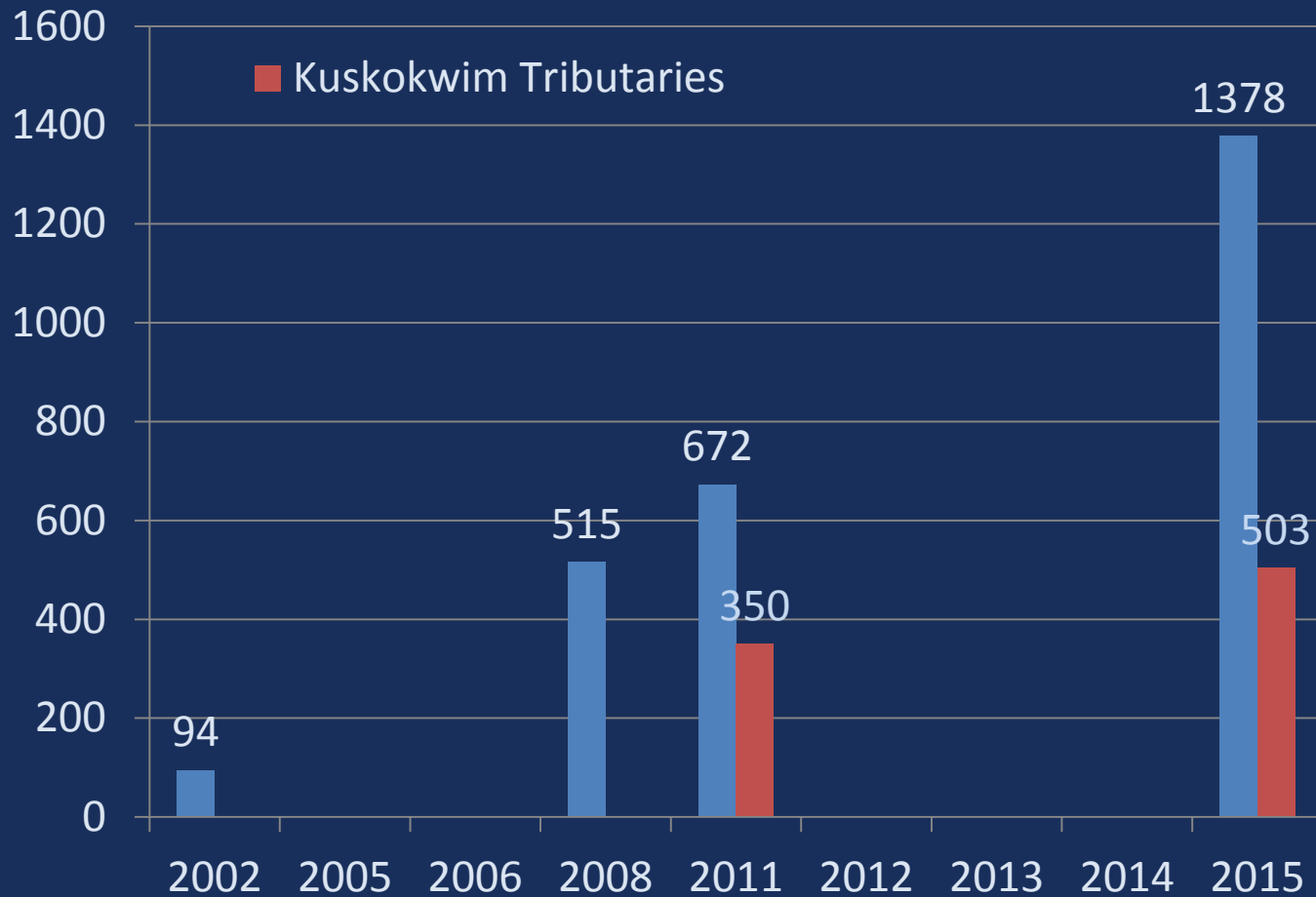
**General Land Status**

**Ownership**

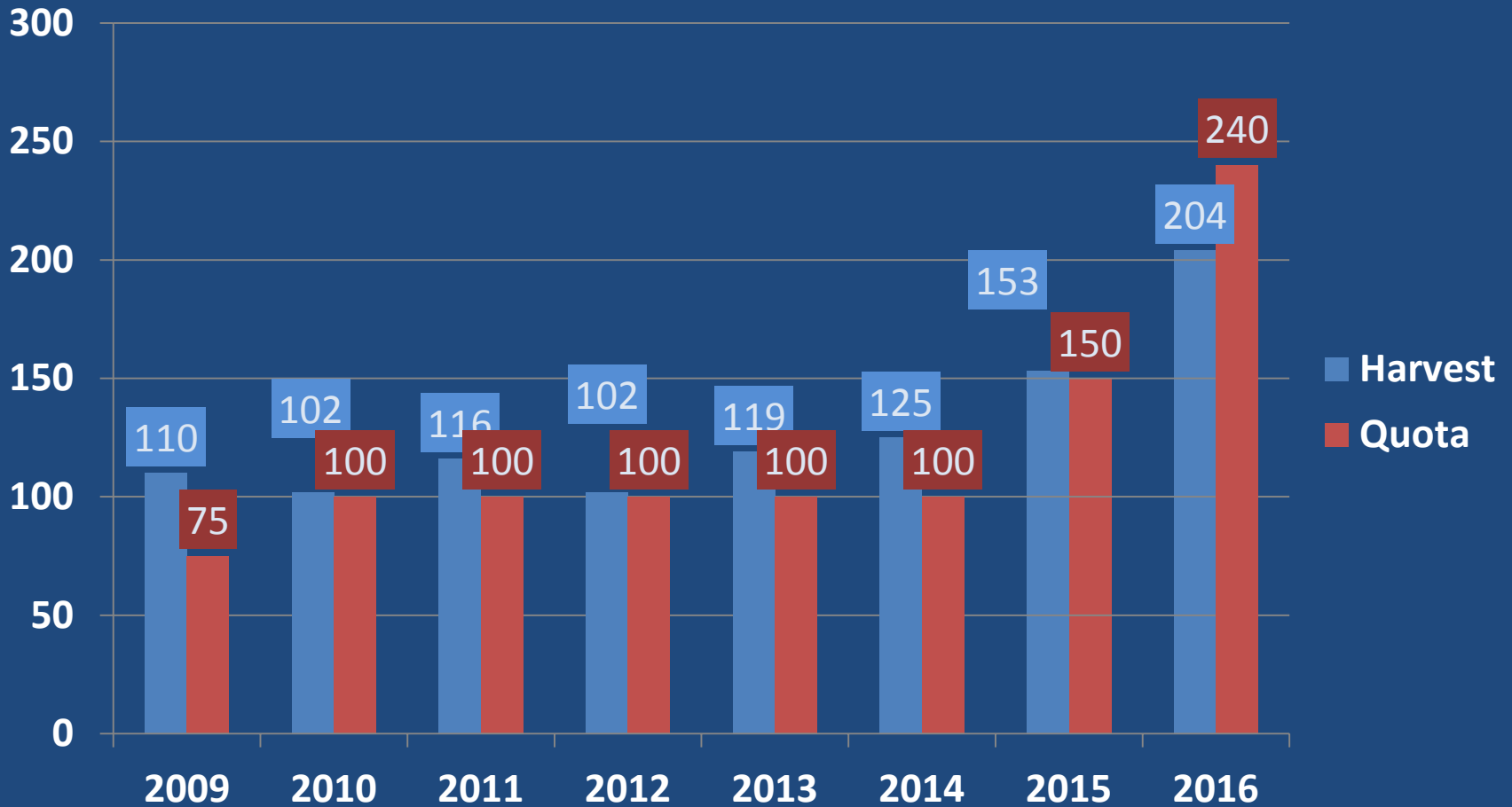
- BLM
- National Wildlife Refuge
- Native
- Private or Municipal
- State
- State and Native



# Population Estimates



## Unit 18





# Kuskokwim Browse Removal

(April 2016)



**Browse biomass removal estimate  
15.7%  $\pm$  1.7%**

**Population Estimate of 1378 (2015)**

**Twinning rate of 46%(2016)**

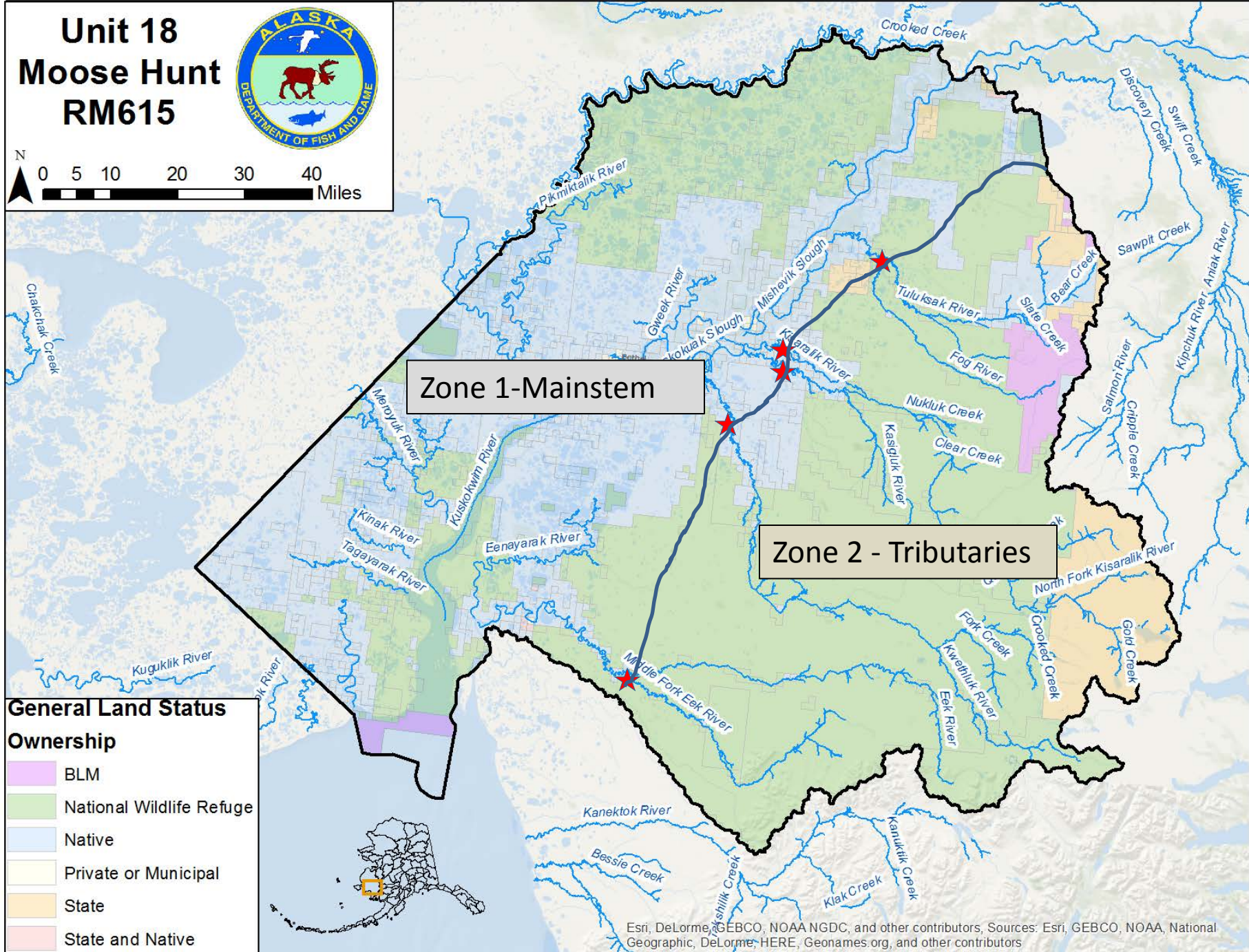
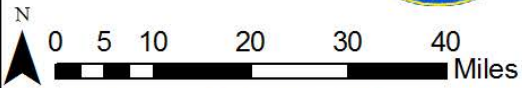
**56:100 calves to cow(2016)**

**70:100 bulls to cow(2016)**

**2013 Calf weights of female calves  
Averaged 384 pounds.**



# Unit 18 Moose Hunt RM615



Zone 1-Mainstem

Zone 2 - Tributaries

## General Land Status

### Ownership

- BLM
- National Wildlife Refuge
- Native
- Private or Municipal
- State
- State and Native



Esri, DeLorme, GEBCO, NOAA NGDC, and other contributors, Sources: Esri, GEBCO, NOAA, National Geographic, DeLorme, HERE, Geonames.org, and other contributors

## Lengthen Moose Hunting in Unit 18 Kuskokwim Hunt area

**Department Recommendation: Support**

*This is a public proposal.*

*Central Bering Sea AC*

*Did not Support (0-8)*

*Lower Kuskokwim AC*

*Did not Support (0-9)*

*Bethel AC*

*Pending meeting*

*Mid Lower Yukon AC*

*Pending meeting*

*Coastal Lower Yukon AC*

*Pending Meeting*



## Open Resident Winter Moose Hunt in Unit 18 Goodnews River Drainage

*Recommendation: Support*

*Proposed by Native Village of Goodnews Bay*

<i>Central Bering Sea AC</i>	<i>Support (6-0)</i>
<i>Lower Kuskokwim AC</i>	<i>Did not Support(4-5)</i>
<i>Bethel AC</i>	<i>Pending meeting</i>
<i>Mid Lower Yukon AC</i>	<i>Support (5-0)</i>
<i>Coastal Lower Yukon AC</i>	<i>Support (5-0)</i>

Current Regulations: Residents 1 antlered bull,  
September 1 – 30

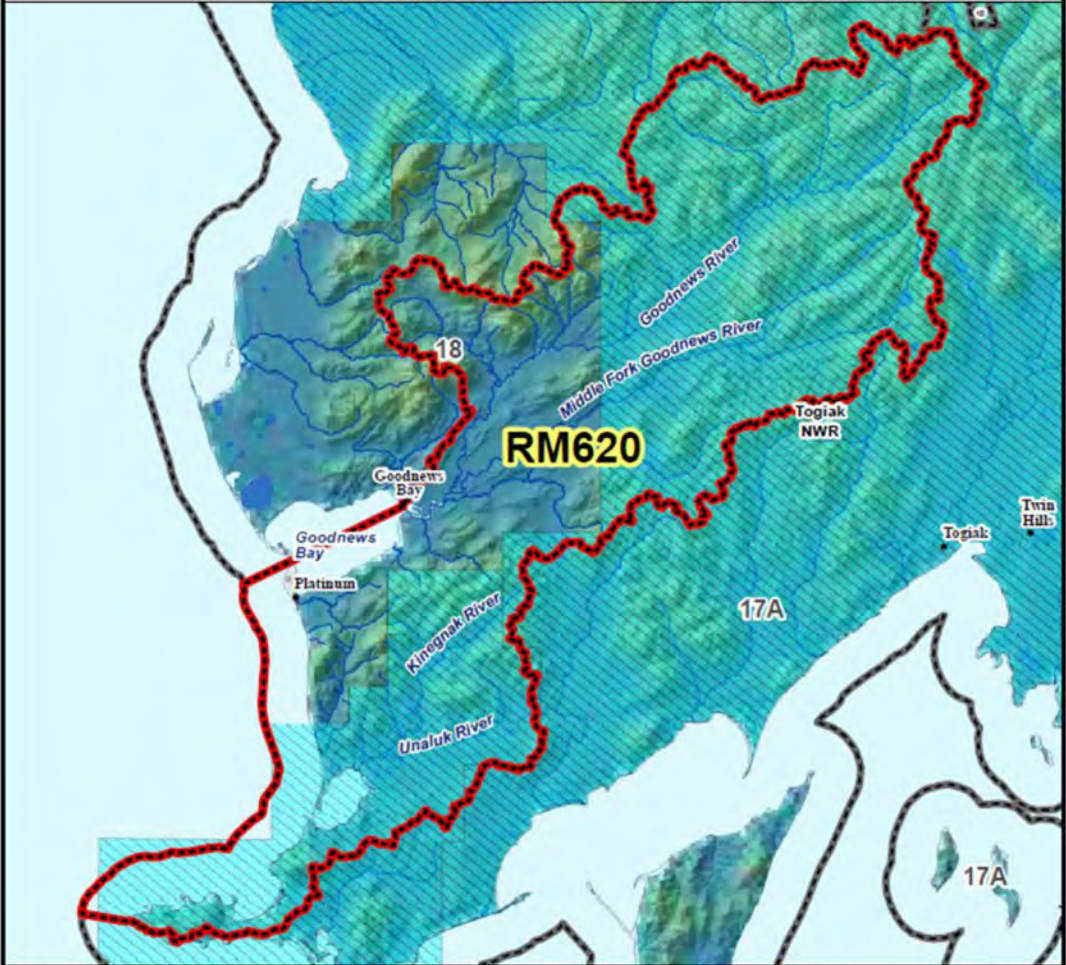
**Proposed Regulations :** Residents 1 antlered bull  
September 1 – 30

**And**

**1 antlered bull  
21 day season “to be announced”  
during January**



## RM620 Moose Registration Permit Hunt



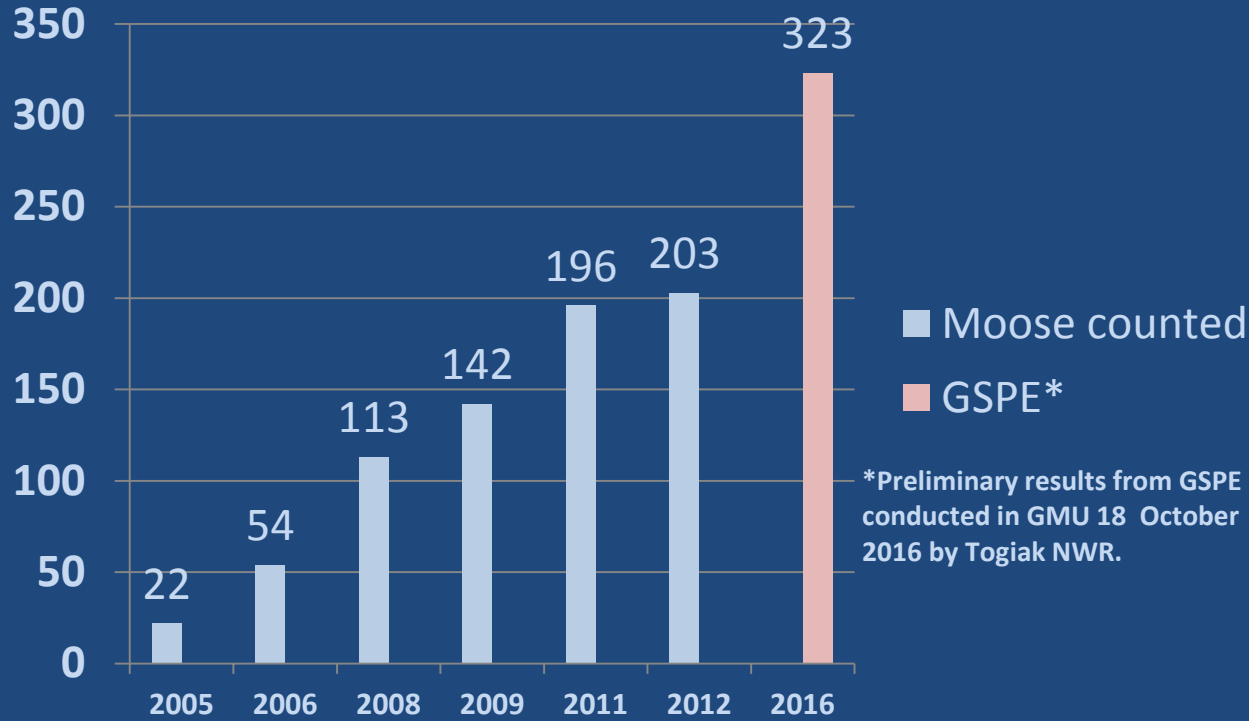
AREA DESCRIPTION: Unit 18, that portion south of and including the Goodnews River drainage.

0 4.5 9 18 Miles

Year	Permits Issued	Hunted	Reported Harvest	Quota (Bulls only)
2008	40	35	13	10
2009	45	33	10	10
2010	48	44	11	10
2011	46	36	17	20
2012	53	37	13	20
2013	42	36	15	20
2014	44	40	12	20
2015	36	30	15	20
2016	35	26	16	20



## Moose in Goodnews drainage



## Moose Composition from 2016 GSPE flights

Percent Bulls	Bull: 100 Cows	Percent Calves	Calf:100 cows	Sample size
25%	47	22%	41	137

## Open Resident Winter Moose Hunt in Unit 18 Goodnews River Drainage

*Department Recommendation: Support as amended by  
Native Village of Goodnews Bay*

<i>Central Bering Sea AC</i>	<i>Support (6-0)</i>
<i>Lower Kuskokwim AC</i>	<i>Did not Support(4-5)</i>
<i>Bethel AC</i>	<i>Pending meeting</i>
<i>Mid Lower Yukon AC</i>	<i>Support (5-0)</i>
<i>Coastal Lower Yukon AC</i>	<i>Support(5-0)</i>



## Open Nonresident Winter Moose Hunting in Unit 18

**Recommendation: Neutral**

*This is a public proposal.*

*Central Bering Sea AC*

*Did not Support (0-8)*

*Lower Kuskokwim AC*

*Did not Support (0-9)*

*Bethel AC*

*Pending meeting*

*Mid Lower Yukon AC*

*Did not Support(0-4)*

*Coastal Lower Yukon AC*

*Support with Amendment(5-0)*

## Current Regulations

Nonresidents

1 antlered Bull

September 1 - 30

## Proposed Regulations

Nonresidents

1 antlered Bull

September 1 - 30

or

**1 moose**

**December 1 – March 15**





**Moose Population Results**  
**GMU 18 Remainder**

**Yukon River Drainage(3 count areas)**

**Lowest Yukon (2008 GSPE)**

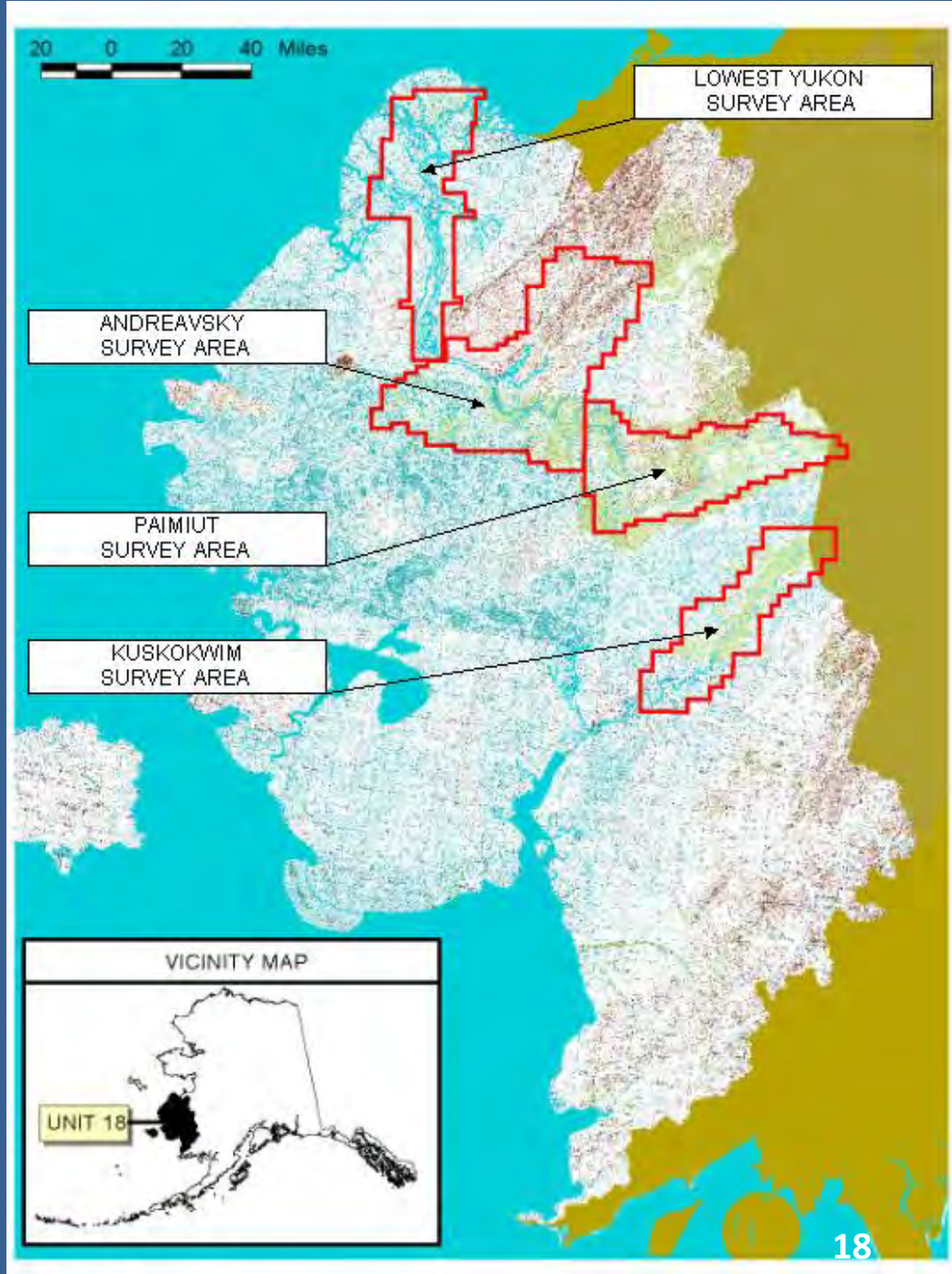
**3320 ±13%**  
**75 calves :100 cows(2016 Comp count)**  
**51bulls:100 cows**

**Andreafsky (2012 GSPE)**

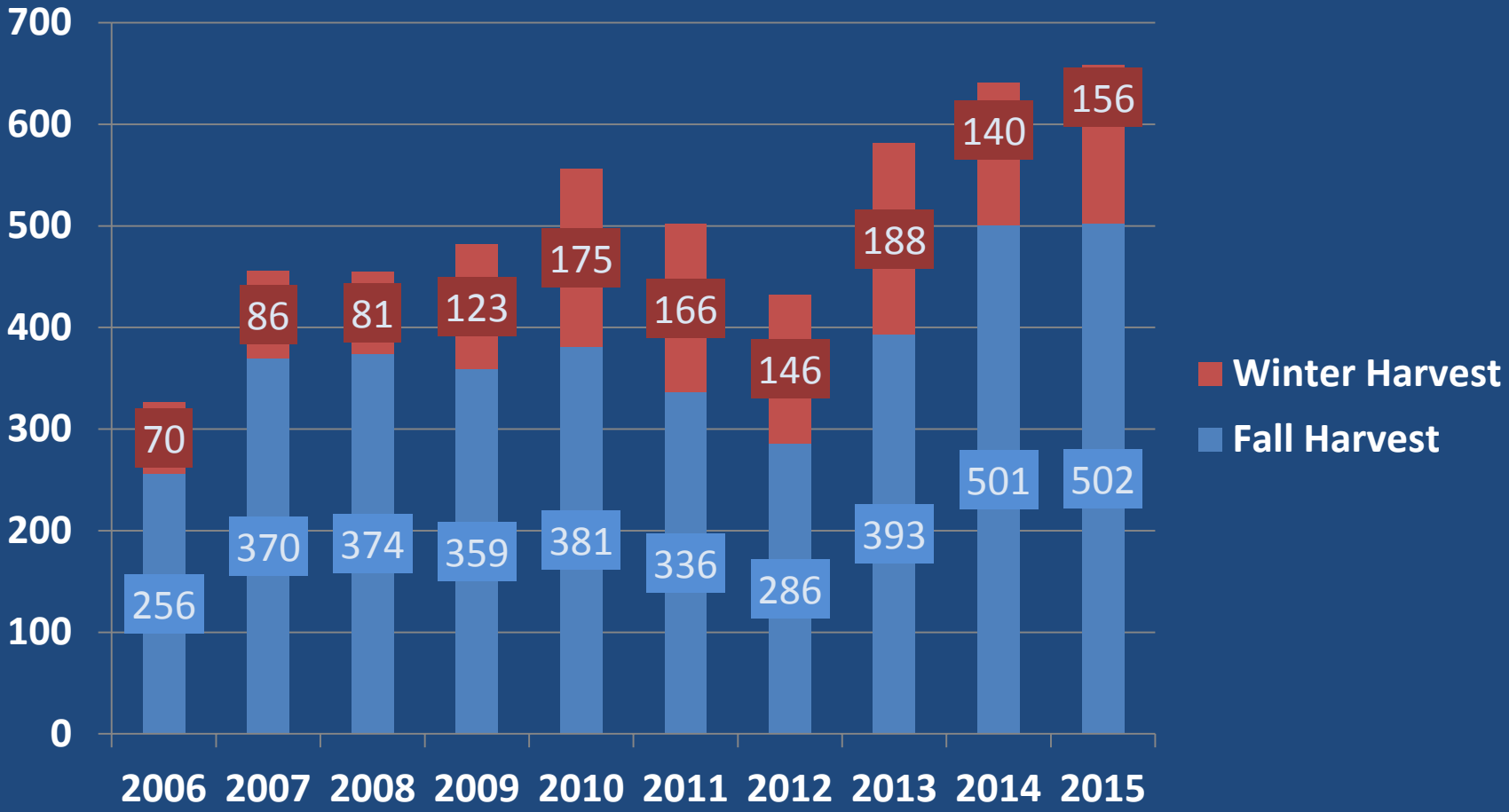
**2748 ±16%**  
**48 calves :100 cows**

**Paimiut (2013 GSPE)**

**5597 ±15%**  
**54 calves:100 cows (2016 Comp count)**  
**58 bulls:100 cows**

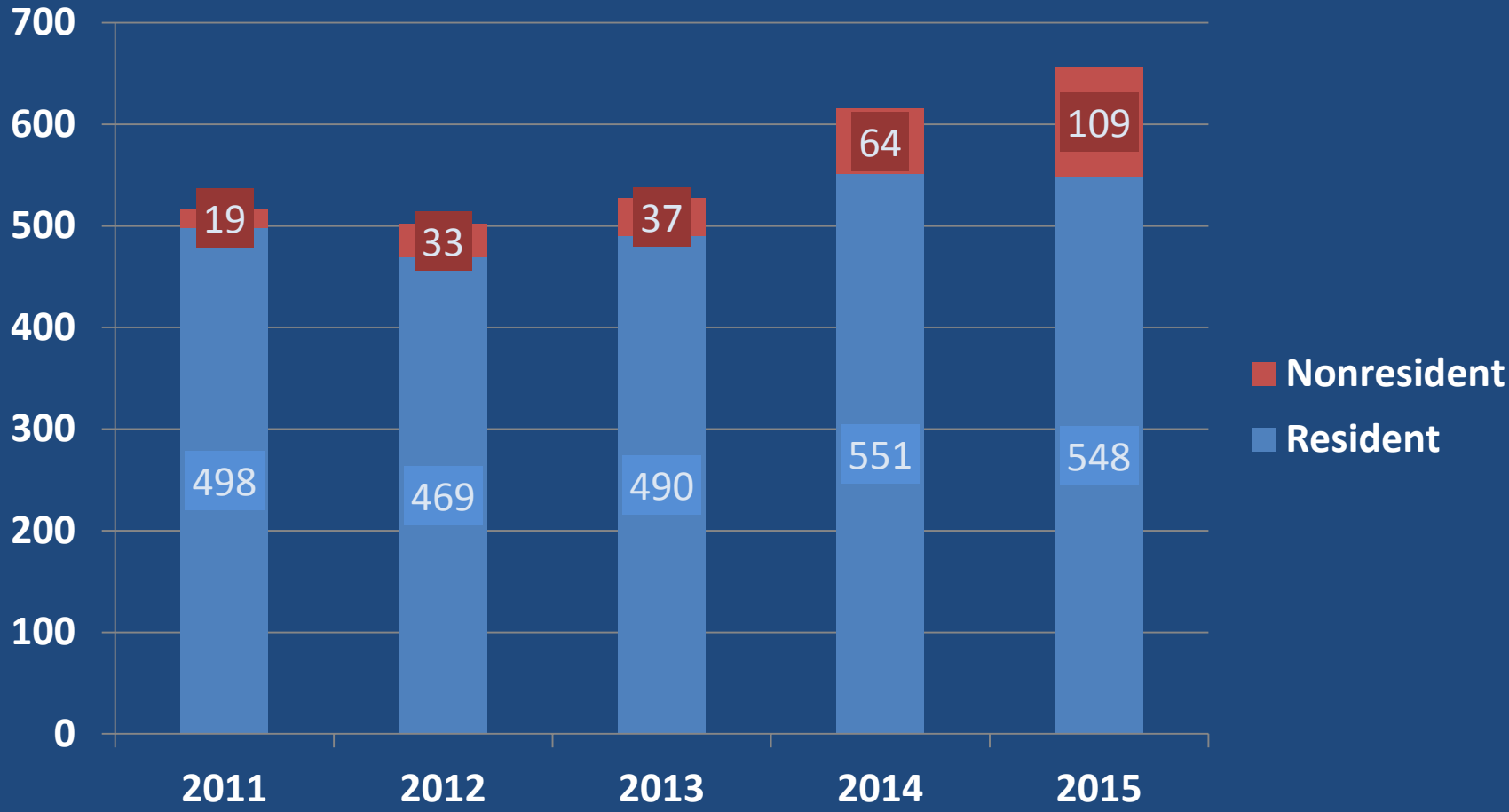


## Unit 18 Remainder Harvest





## Unit 18 Remainder Harvest



## Open Nonresident Winter Moose Hunting in Unit 18

**Recommendation: Neutral**

*This is a public proposal.*

*Central Bering Sea AC*

*Did not Support (0-8)*

*Lower Kuskokwim AC*

*Did not Support (0-9)*

*Bethel AC*

*Pending meeting*

*Mid Lower Yukon AC*

*Did not Support(0-4)*

*Coastal Lower Yukon AC*

*Support with Amendment(5-0)*

## Reauthorize resident antlerless Moose Hunting in Unit 18

**Recommendation: Support**

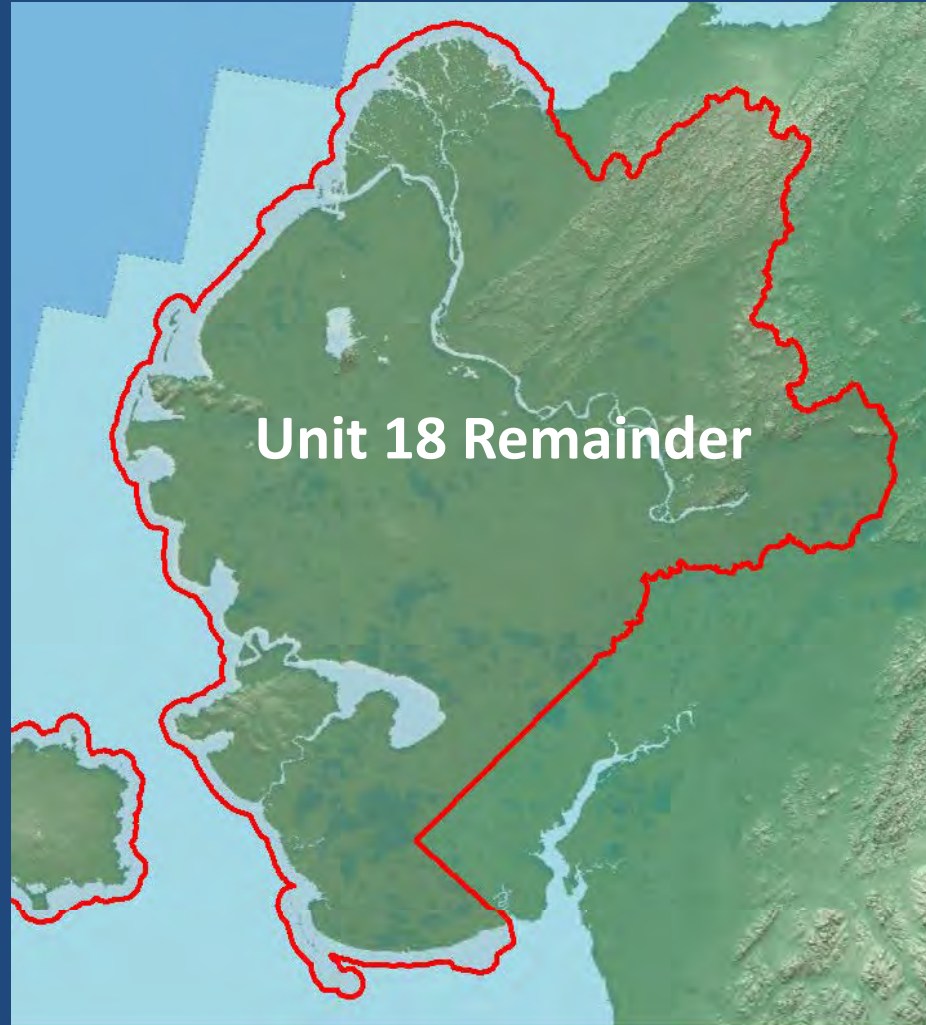
### *Department Proposal*

<i>Central Bering Sea AC</i>	<i>Support (6-0)</i>
<i>Lower Kuskokwim AC</i>	<i>Support (5-0)</i>
<i>Bethel AC</i>	<i>Pending mtg</i>
<i>Mid Lower Yukon AC</i>	<i>Support (5-0)</i>
<i>Coastal Lower Yukon AC</i>	<i>Support (4-0)</i>



### Current Seasons in Unit 18 Remainder:

- 1) August 1–September 30 the bag limit is 2 moose; however, only one antlered bull may be taken and taking calves or cows accompanied by calves is prohibited;
- 2) October 1–November 30 the bag limit is 2 antlerless moose with no additional restrictions; and
- 3) December 1–March 15 the bag limit is 2 moose with no additional restrictions.



**Moose Population Results**  
**GMU 18 Remainder**

**Yukon River Drainage(3 count areas)**

**Lowest Yukon (2008 GSPE)**

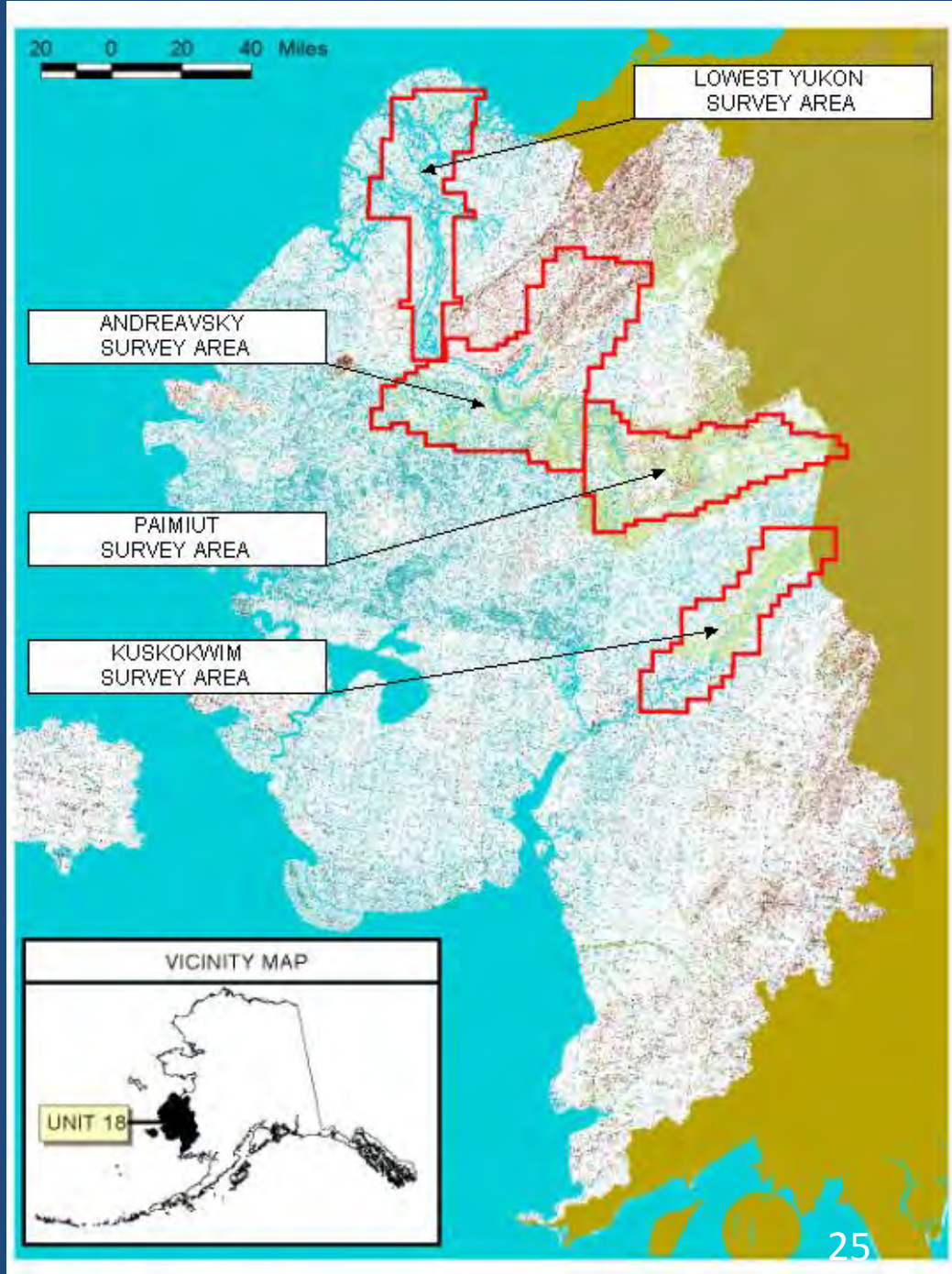
**3320 ±13%**  
**75:100 calves to cows**  
**51:100 bulls to cows**

**Andreavsky (2012 GSPE)**

**2748 ±16%**  
**48:100 calves to cows**

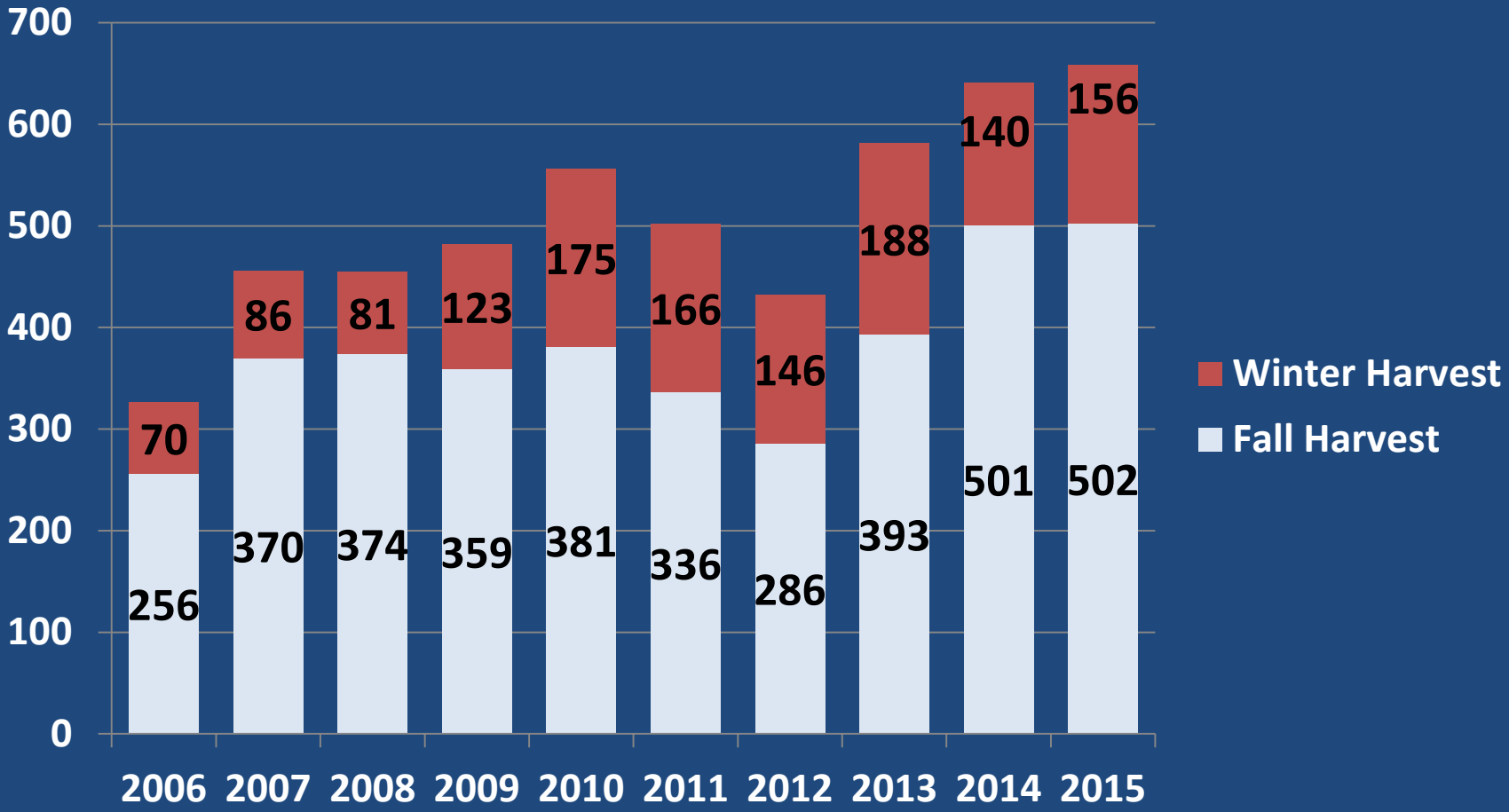
**Paimiut (2013 GSPE)**

**5597 ±15%**  
**56:100 calves to cows**  
**58:100 bulls to cows**

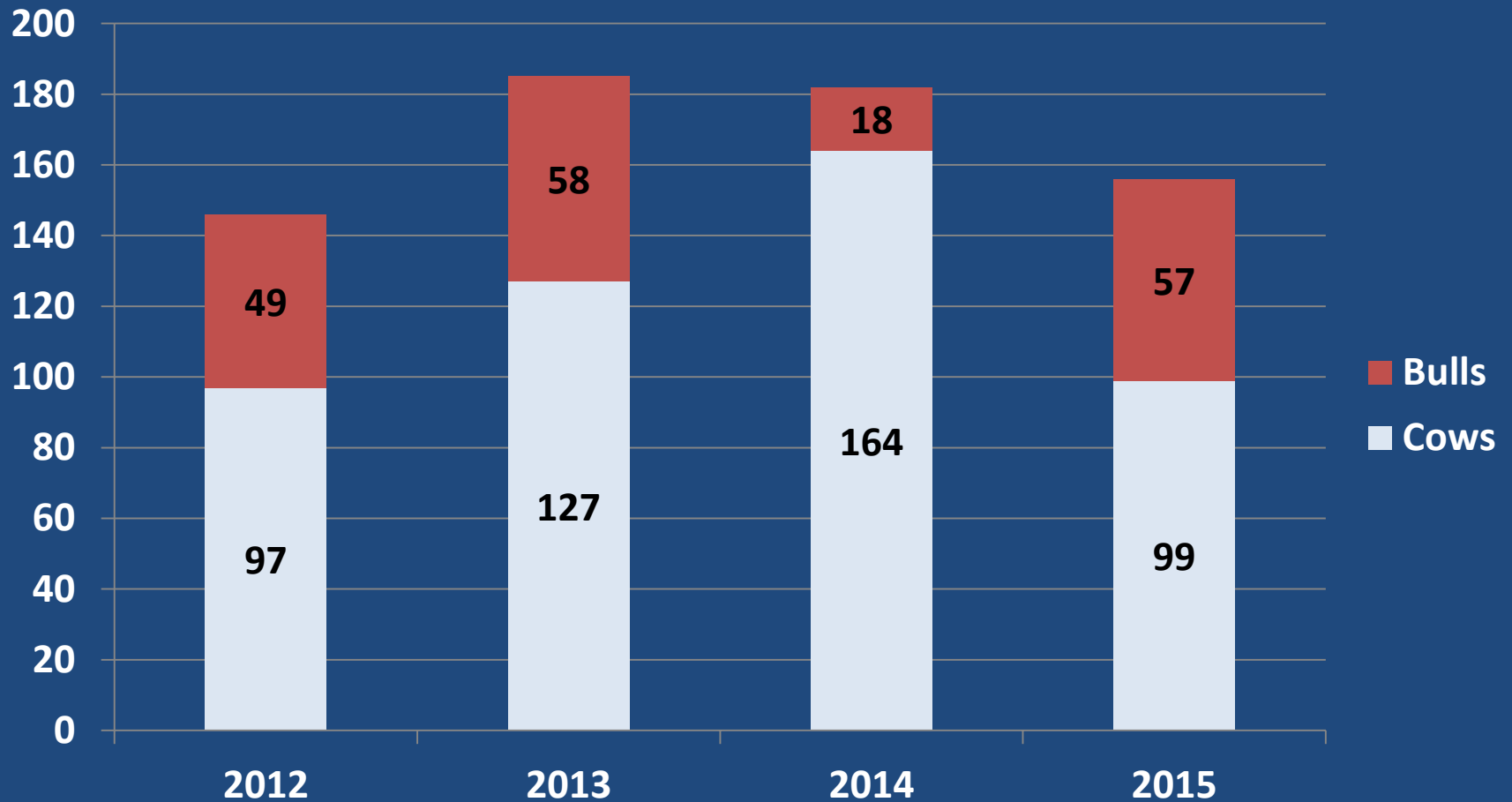




## Unit 18 Remainder Harvest

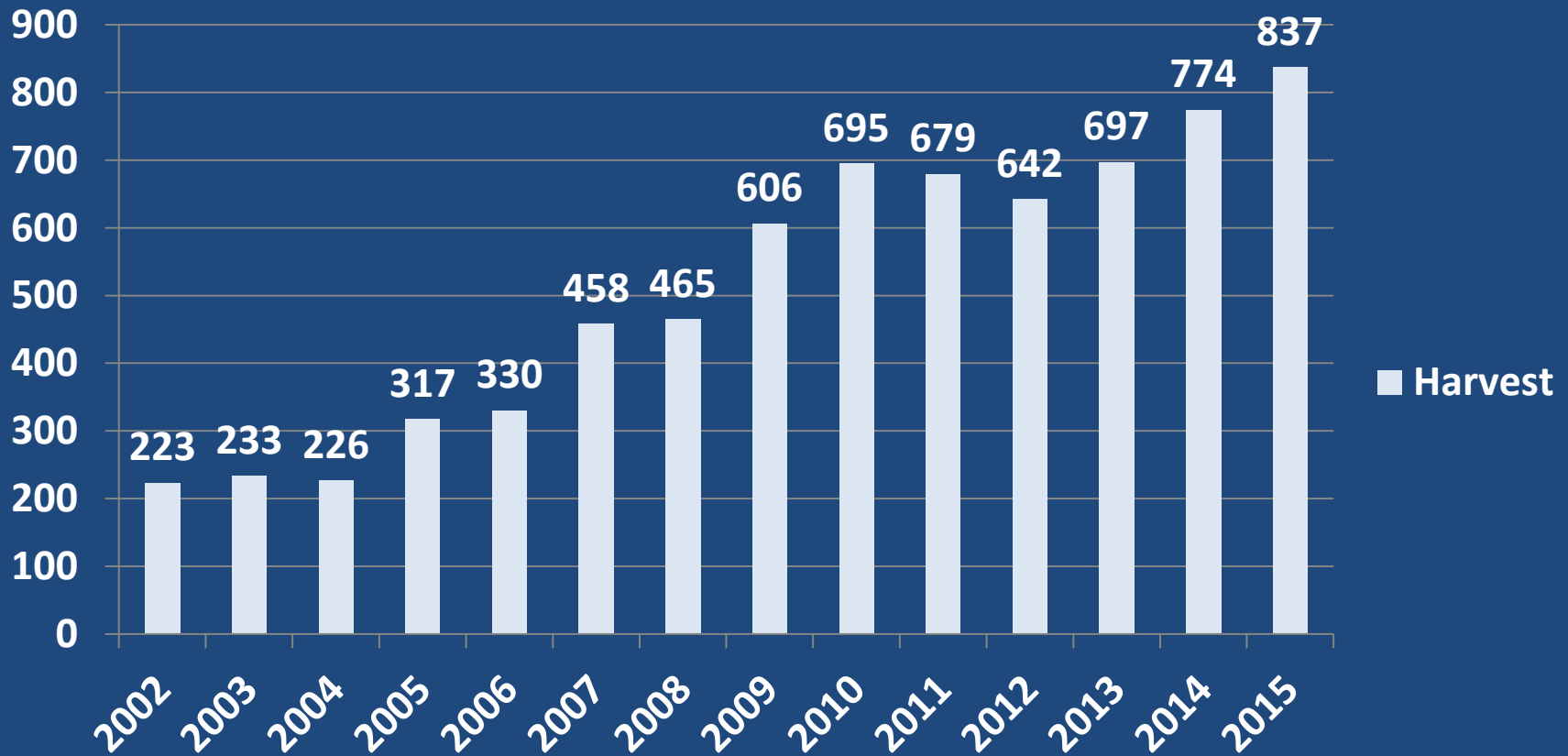


## Unit 18 Remainder Winter Harvest (October thru March)



# Unit 18 Moose Harvest- all hunts

Harvest





## **Reauthorize resident antlerless Moose Hunting in Unit 18**

**Recommendation: Support**

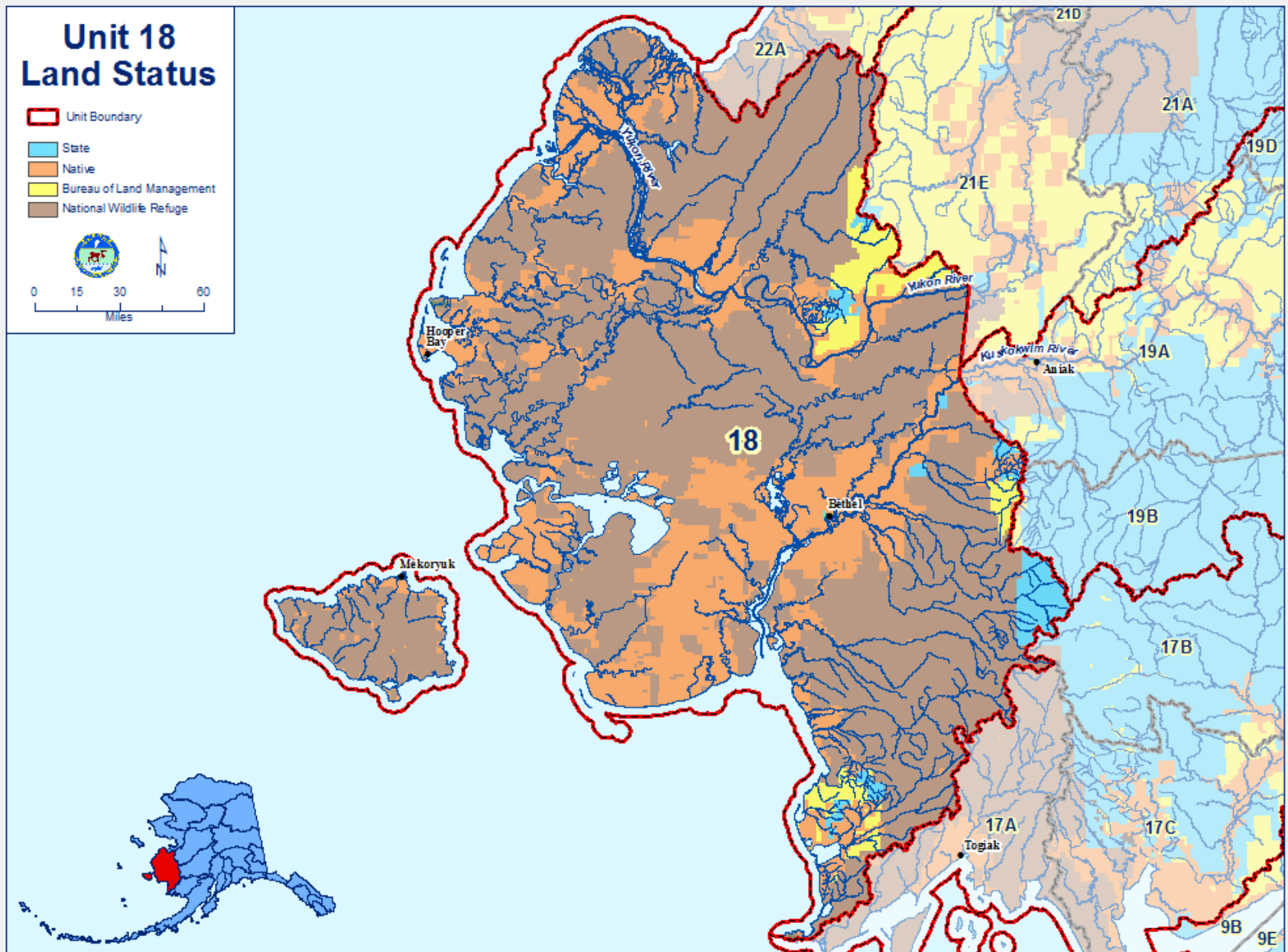
*Department Proposal*

### Allow the harvest of brown bears at bait stations in Unit 18

Recommendation: Neutral

#### Public Proposal

<i>Lower Kuskokwim A C</i>	<i>Support</i>
<i>Central Bering Sea A C</i>	<i>Opposed</i>
<i>Lower Yukon AC</i>	<i>Opposed</i>
<i>Bethel AC</i>	
<i>Central Kuskokwim</i>	<i>Support</i>
<i>Costal lower Yukon</i>	<i>Opposed</i>



**Current Season:**

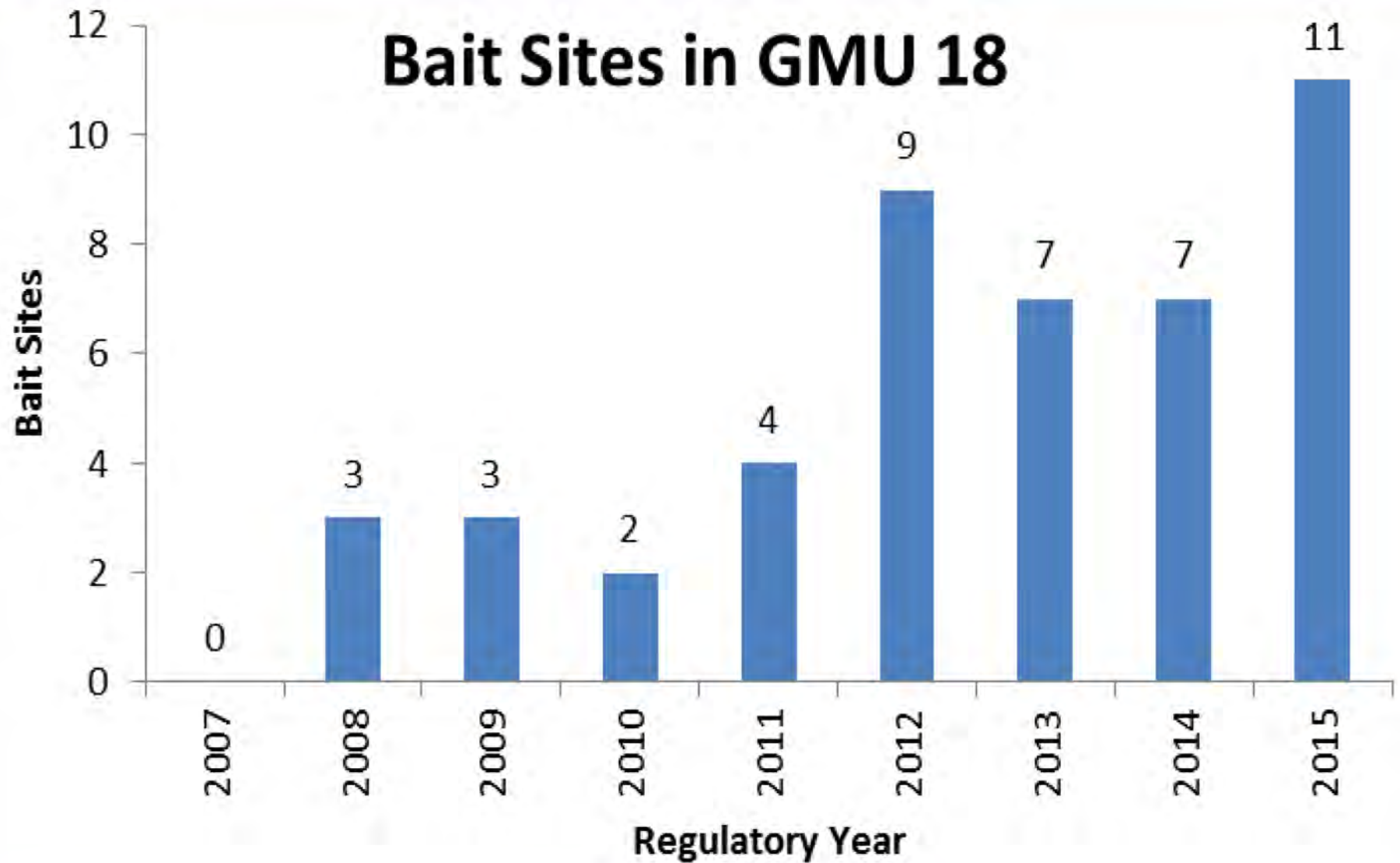
**No Open Season**

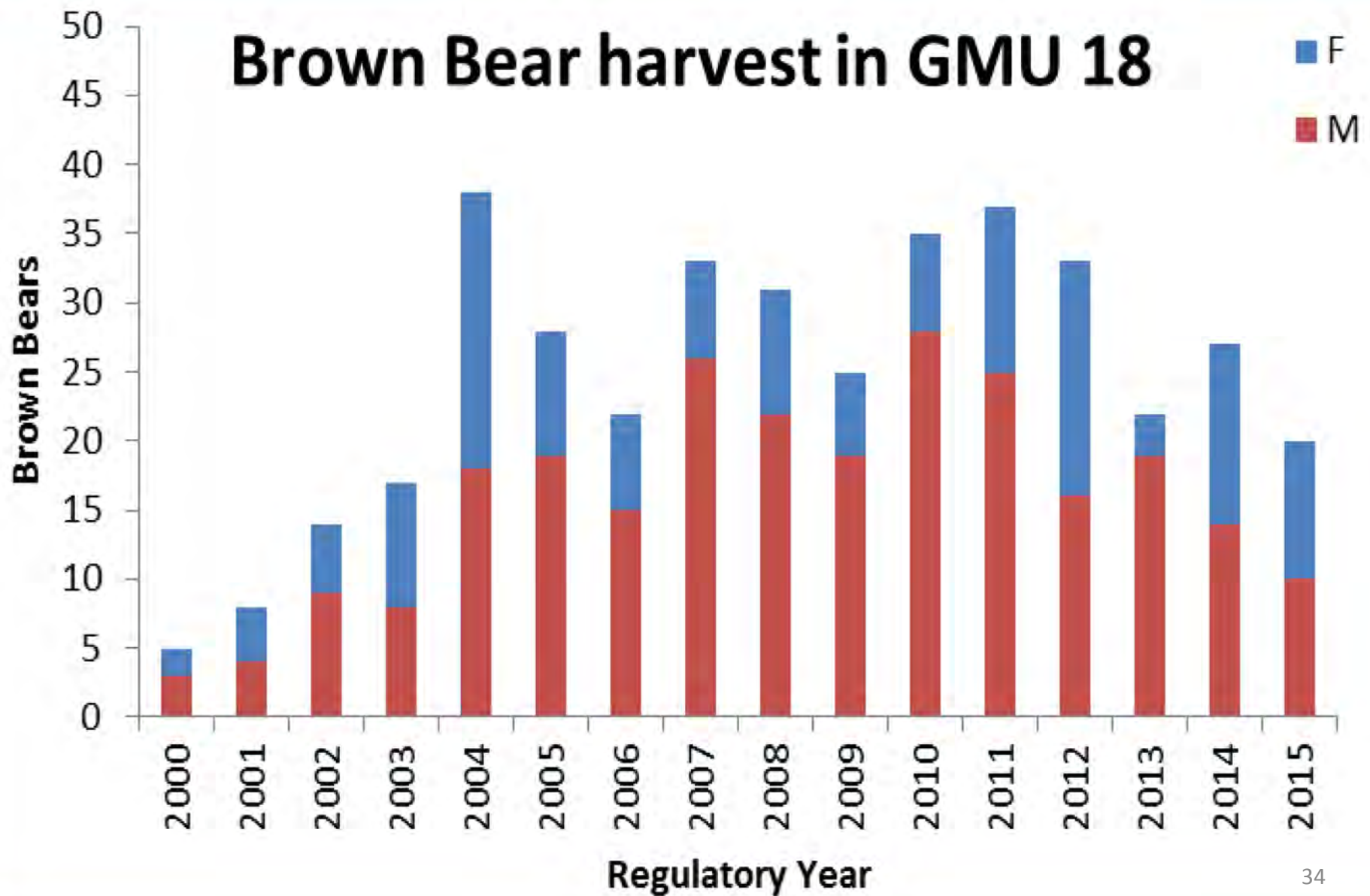
**Proposed Season**

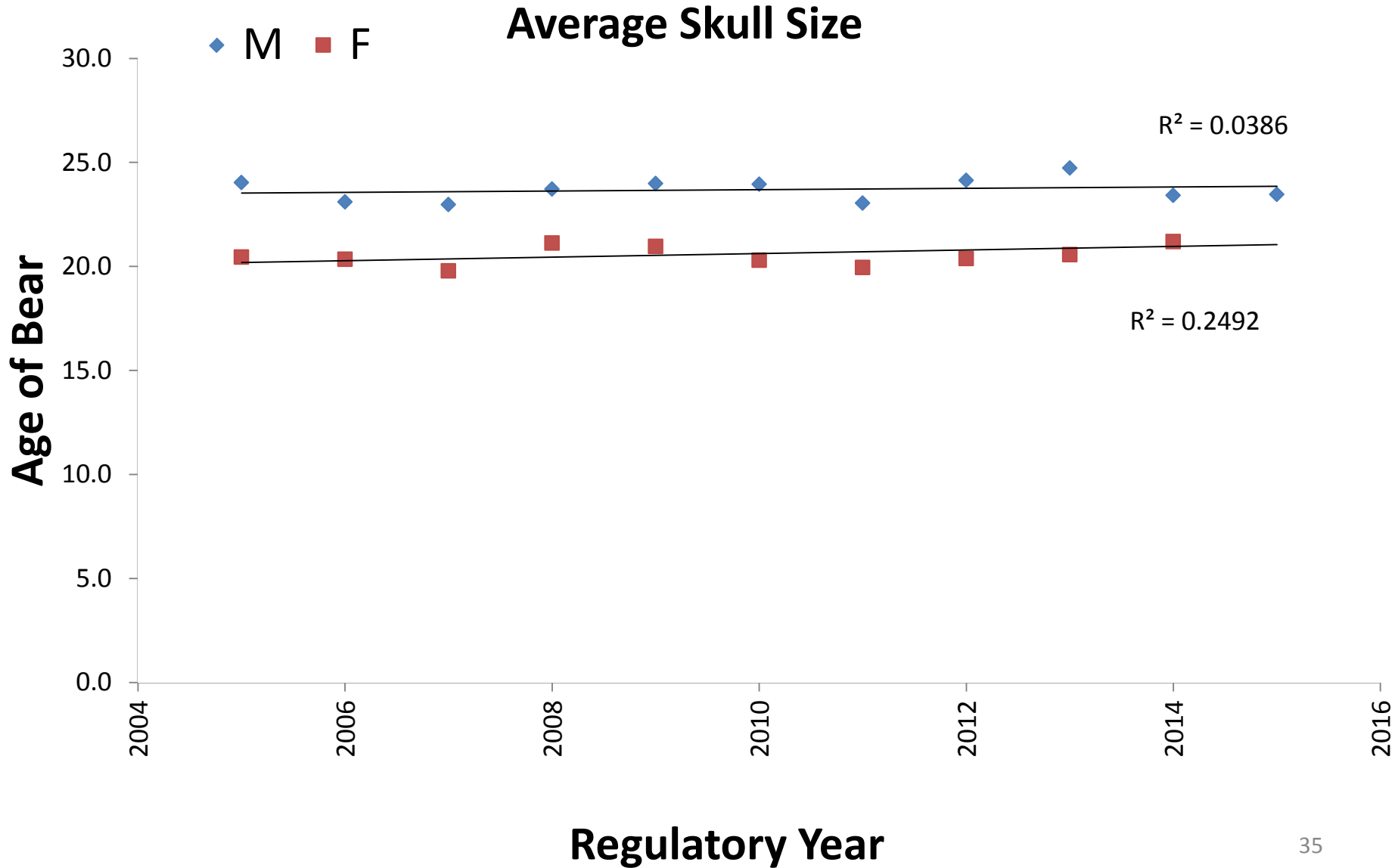
**Apr 15 – June 30**

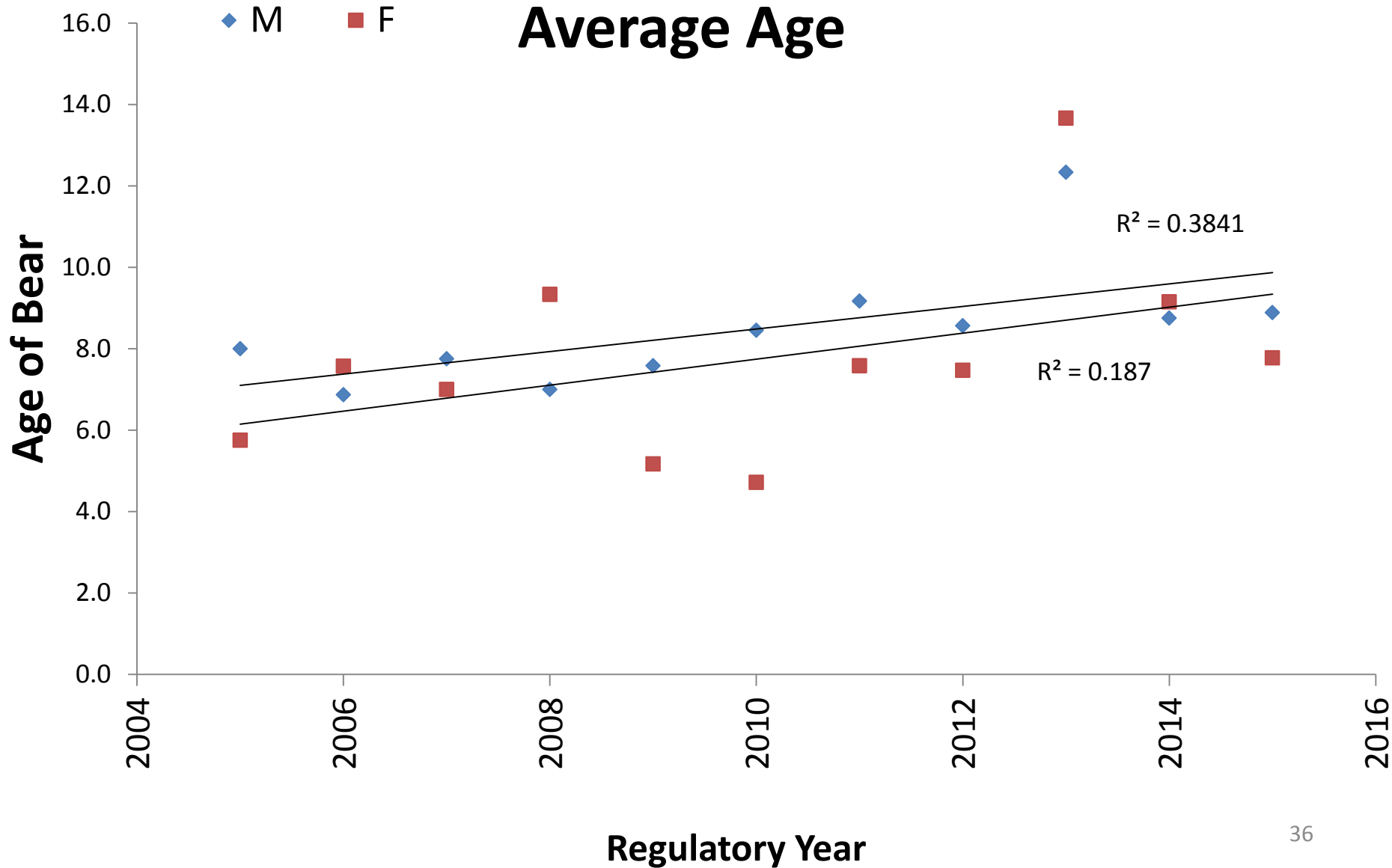
- **No Emergency Order**
- **No Board action**













### Allow the harvest of brown bears at bait stations in Unit 18

Recommendation: Neutral

#### Public Proposal

*Lower Kuskokwim A C*  
*Central Bering Sea A C*  
*Lower Yukon AC*  
*Bethel AC*  
*Central Kuskokwim*  
*Costal lower Yukon*

*Support*  
*Opposed*  
*Opposed*  
*Support*  
*Opposed*

## Open a Nonresident Draw Hunt for Caribou in Units 18 & 19

Department Recommendation: **Defer**

### Public Proposal

---

*Togiak AC: Oppose (9-0-0)*  
*Nushagak AC: Oppose (11-0-0)*

### Caribou Management in Units 18 and 19A&B

- Considered part of the Mulchatna Caribou Herd
- Included with Units 17 & 9 (A,B, and a portion of C)
- Managed under registration permit RC503
- Generally managed under a consistent management strategy

## Mulchatna Caribou Hunt Regulations

### Current regulations:

#### Mulchatna Caribou

17 and 9B

18, 19A&B, and 9B&C

(Alaska resident season only)

(2 caribou by registration permit-RC503)

#### Season dates

Aug 1–Mar 31

Aug 1–Mar 15

### Proposed new regulation:

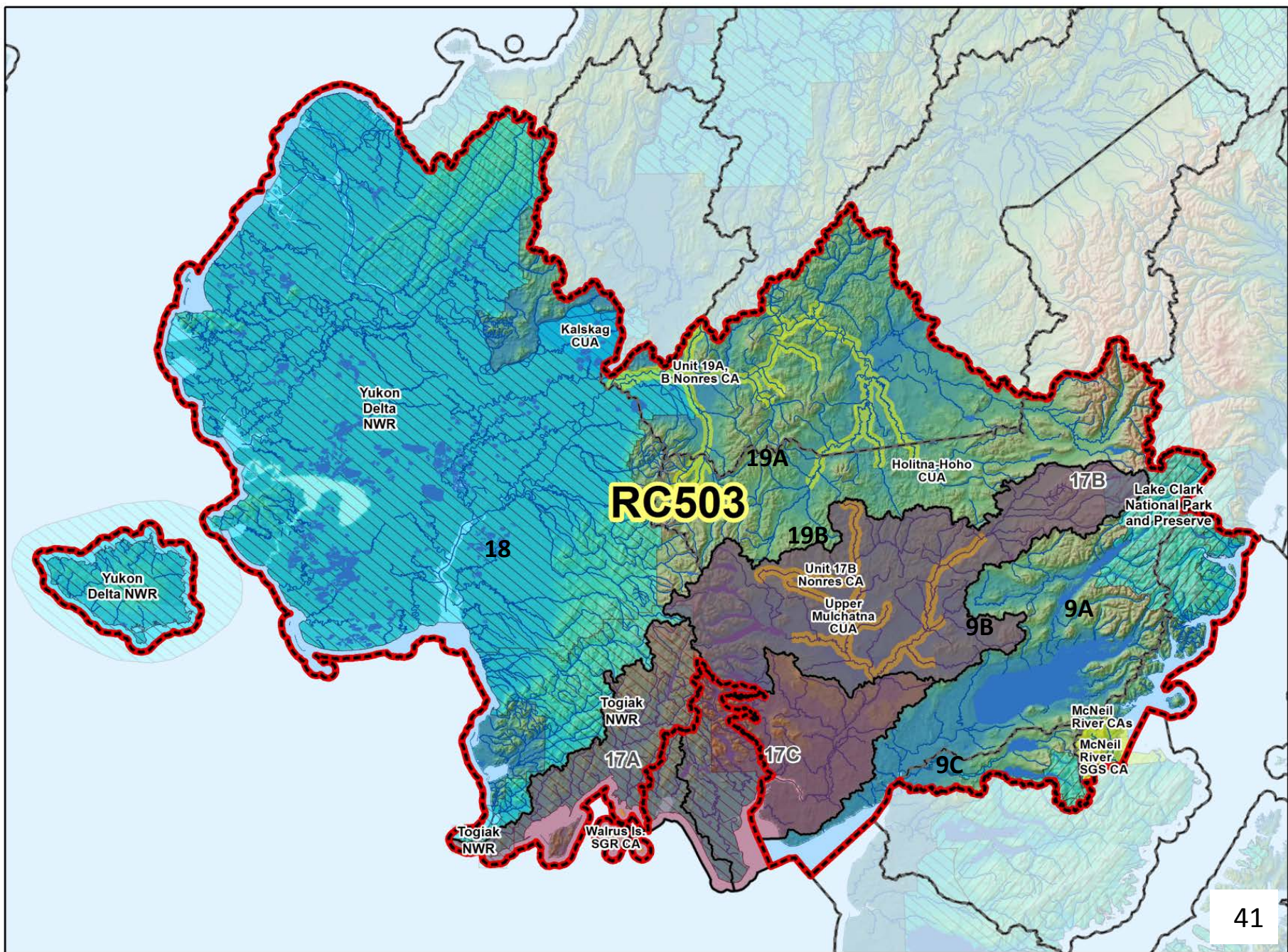
**18, 19A, and 19B**

**(Nonresident season)**

**(1 bull by drawing permit-up to 50 permits)**

**Sep 1–Sep 30**





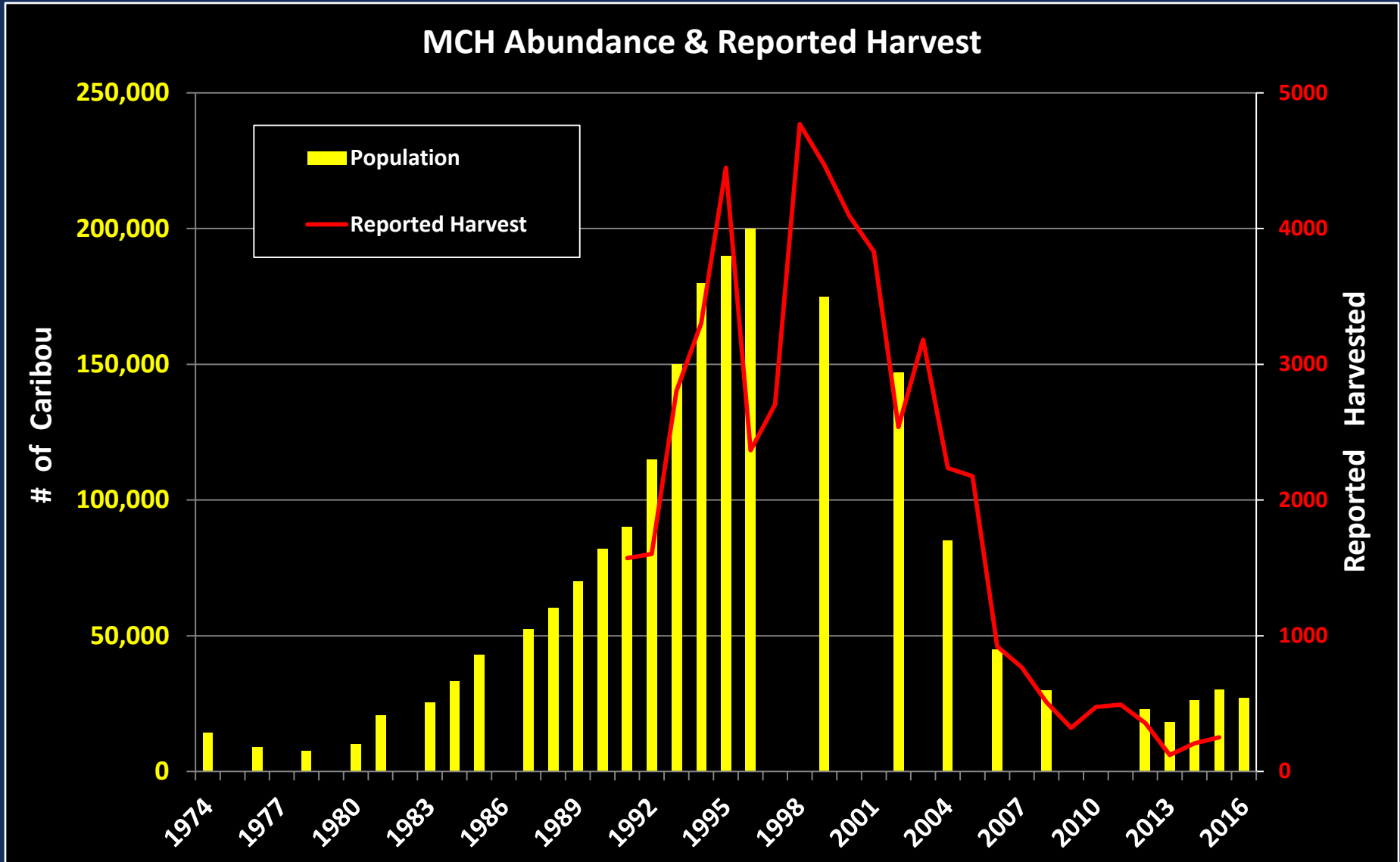


### Recent history on nonresident season

- Closed throughout Mulchatna range in RY2009
- Proposals by concerned parties emphasizing low bull-to-cow ratio's and declining population led to closure
- Department position was neutral due to the allocative nature of these proposals

# Proposal 25

# Caribou / Units 18, 19A&B



# Intensive Management Plan

## Predation Management Area Mulchatna Caribou Herd 5 AAC 92.111 (c)

- **Area: GMUs 9B, 17B&C, 19A&B**
- **Purpose: To increase the Mulchatna Caribou Herd to aid in achieving intensive management objectives**
- **Active Wolf Control**



### IM Objectives

### Current Status

Abundance: 30,000-80,000

27,242

Harvest: 2,400-8,000

$\bar{x} = 193$

Fall bull:100 cow ratio:

- 35 bulls:100 cows

$\bar{x} = 36:100$

Fall calf:100 cow ratio:

- 30 calves:100 cows

$\bar{x} = 27:100$

### Discussion

- Most IM objectives not being met
- ANS of 2,100–2,400 not being met
- Harvestable surplus of ~1,200 would not provide for ANS
- Reported harvest is far below surplus
- Access not abundance is limiting harvest

## Open a Nonresident Draw Hunt for Caribou in Units 18 & 19

Department Recommendation: **Defer**

### Public Proposal

---

*Togiak AC: Oppose (9-0-0)*

*Nushagak AC: Oppose (11-0-0)*